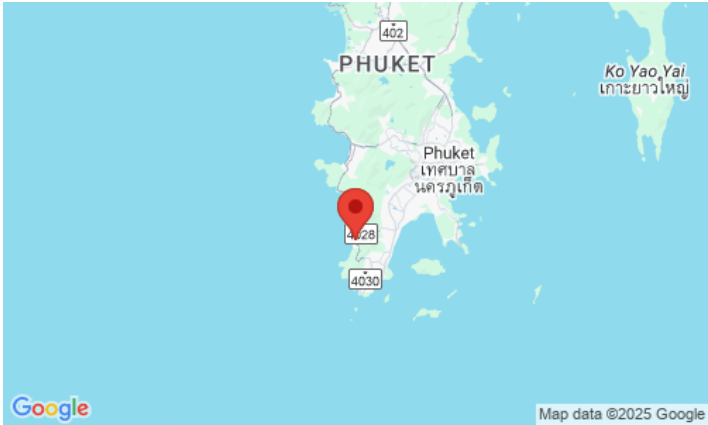


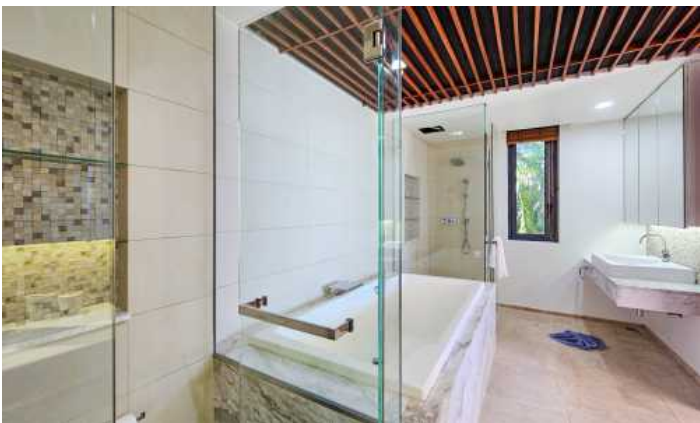
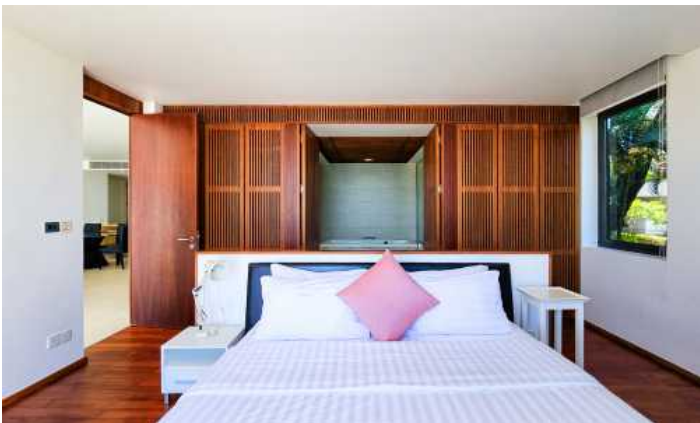
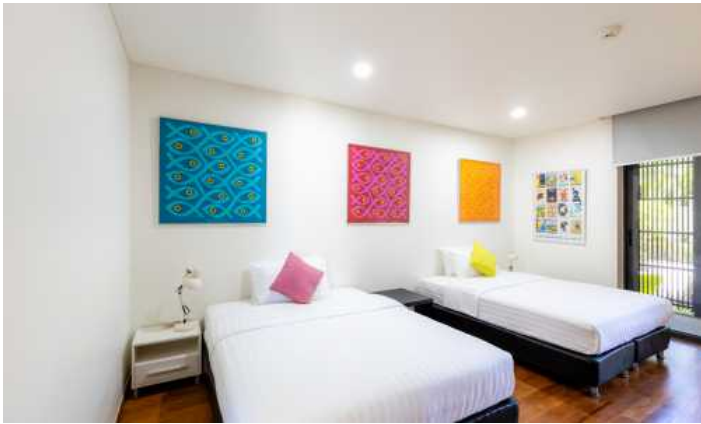
ID7398 THE HEIGHTS KATA PHUKET LUXURY 2BEDROOM OCEAN VIEW



| | | | |
|-----------------|------------|----------------|--------------------------------------|
| Deal type | Rent | Bathrooms | 2 |
| Property type | Apartments | Total area, m² | 220 |
| Stage | Completed | View | Sea View, Mountain View, Garden view |
| Completion date | 2009 | Floors | 3 |
| To the beach, m | 500 | Furniture | Furnished |
| Bedrooms | 2 | Listed by | Company |
| Guests | 4 | | |

| Periods | Day, THB | 3 Days, THB | Week, THB | 2 Weeks, THB | Month, THB |
|---------|----------|-------------|-----------|--------------|------------|
| - | 0 | 0 | 0 | 0 | 0 |





The apartment design is contemporary and modern. The charm of the height is overlooking sea view from your master bedroom, living room, kitchen and balcony. Living areas are spacious with ample furnishings and select art pieces. Both the living and dining areas are open plan, making the apartment meld together seamlessly.

The kitchen is great and completely equipped with oven, microwave, dishwasher and coffee maker. A separate storage area gives way to a state-of-the-art washer and dryer. Cutlery and dishes are also available to use within the apartment.

The 2 bedrooms feature beautiful wood trimmings and have a very chic feel. Beds are fitted with comfortable linens. Throughout the apartment, there is wireless broadband access, television with home theater system.

The sea view balcony of The Heights 2 Bed Apartment includes a double sun lounger and dining table with seating for six. Located near Kata Beach, The Heights 2 Bed Apartment is nestled into a tropical hillside with close access to all the best a luxury holiday in Phuket has to offer.

Nestled atop the hillside above Kata Beach, just a short drive from the white sandy beaches and charming sea-side village of Kata, The Heights Phuket showcases stunning views of the Andaman Sea. With easy access to world-class amenities and recreational choices at your discretion, experience the luxury of complete island living, all from the comfort of one of Phuket's most exclusive residences.

The unique project The Heights by renowned designer Hans Brouwer was built in 2009. Simple functional spaces and quality natural materials represent the best combination of east and west. The complex located on a hill offers a magnificent panoramic view of the Kata Bay, and in order to enjoy it to the fullest, the designer has created huge terraces with transparent railings. The project represents 51 residences, which are terraced one above the other on a hill, each of the residences has a separate entrance and a magnificent sea view. There are two types of residences in the project: 2-bedroom apartments with spacious terraces of 219m² and duplex penthouses with 3 bedrooms, with private pools and the best sea views of 410m². The project looks very modern, high ceilings, light colours, huge panoramic windows and straight lines. The Heights Phuket has won the Thailand Property Awards for Best Condominium in Thailand and Phuket.

Infrastructure

The Heights offers its guests and owners the complete infrastructure of a good hotel: communal swimming pool, equipped fitness centre, sauna, covered parking. The complex is guarded round the clock and has a service company on the territory, which instantly solves all household issues of its residents and guests.

What's nearby

The huge advantage of the project over the rest is the stunning views of the sea and sunsets, plus its ideal location! Very close - in a straight line about 300 meters, along the road - a little further, but no more than 3-5 minutes by car, there are two beaches - the incredibly beautiful Kata Noi beach with the purest turquoise water and white sand, and the noisy, crowded Kata beach. In addition, the entire tourist infrastructure, everything you can wish for on holiday - massage, excursion bureaus, restaurants and cafés, bars, shops in a huge variety are within walking distance. Kata is one of the most popular tourist beaches, but there are no nightclubs and almost no bars, so it is quite calm at night. This area is often chosen for families. And if you go up the road from the apartment, then there you will find a viewpoint overlooking Kata Noi, Kata and Karon, and this road itself leads to Nai Harn Beach. The famous Mom Trees restaurant is located within walking distance.

For whom is it suitable

The residences are very spacious and are ideal not only for relaxation, but also for long-term living. The Heights is chosen by those for whom look and space are very important, as well as lovers of modern style. Renting an apartment here will save you enormous money if you compare the cost of renting with living in hotels of a similar level.