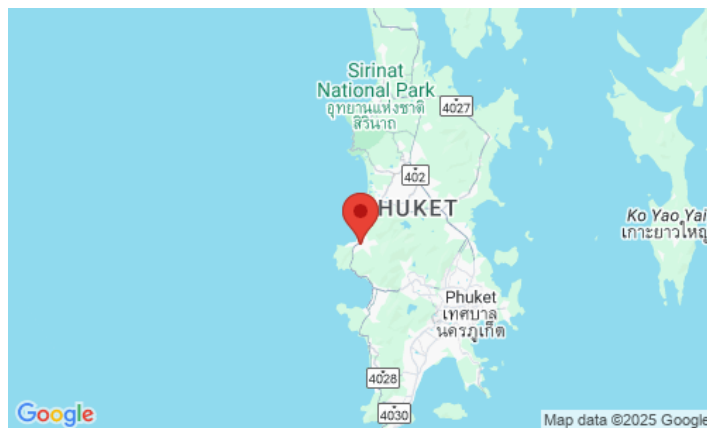


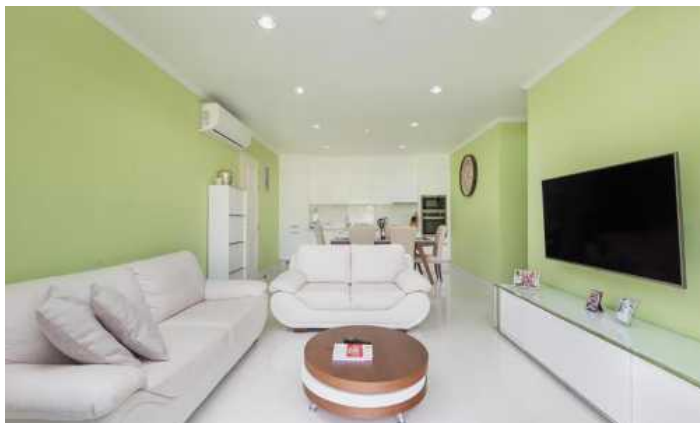
ID8019 CHIC 3-BEDROOM APARTMENTS, WITH MOUNTAIN VIEW IN REGENT KAMALA PROJECT, ON KAMALA BEACH BEACH



Price 7 800 000 THB (0 USD)

Deal type	Sale
Property type	Apartments
Stage	Completed
Completion date	2006
To the beach, m	2000
Bedrooms	3
Bathrooms	2
Total area, m²	100

Price per sqm	78 000 THB
View	Mountain View
Floor	2
Floors	5
Furniture	Furnished
Listed by	Private person
Ownership	Leasehold





Description of the project

Regent Kamala, low-rise condominium on Kamala beach. Consists of 4 buildings and spacious apartments. The condominium was built surrounded by nature, each apartment offers beautiful mountain views, there are also apartments with access to the pool.

Infrastructure

The complex has a communal pool, fitness center, sauna, restaurant and parking. The project is under 24-hour security and video surveillance.

What's nearby

Phuket International Airport is located just 18 km from the hotel complex. The city center is 20 km away. You can get to the resort town of Kamala in just 5 minutes, where there are many shops, cafes, restaurants, beach clubs such as the world famous Cafe Del Mar, PINE Beach Club at Intercontinental Hotel, HQ Beach Club. Phuket FantaSea Theme Park is close by (1.4 km).

For whom is it suitable

Suitable for investment, short-term or long-term stays of small families and couples.