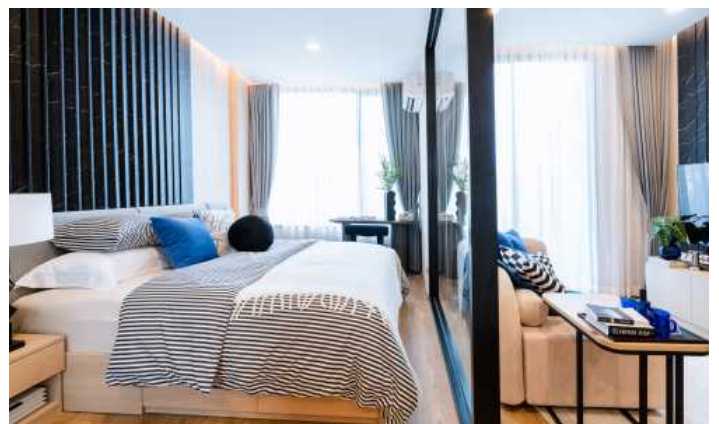


ID8133 GORGEOUS 1-BEDROOM APARTMENTS, WITH URBAN VIEW, ON BANGTAO/LAGUNA BEACH



Price 3 062 000 THB (89 869 USD)

| | | | |
|----------------------------|--------------------|---------------|--------------------|
| Deal type | Sale | Price per sqm | 90 058 THB |
| Property type | Apartments | View | Urban View |
| Stage | Under construction | Floor | 4 |
| Completion date | 2026 | Floors | 7 |
| To the beach, m | 9001 | Furniture | Built-in furniture |
| Bedrooms | 1 | Listed by | Developer |
| Bathrooms | 1 | Ownership | Leasehold |
| Total area, m ² | 34 | | |





Discover Arise Vibe – Redefining Modern Living in Si Sunthon, Phuket

Welcome to Arise Vibe, a visionary condominium project designed to inspire modern lifestyles in the heart of Si Sunthon, Phuket. Developed by the renowned Ornsirin Group, Arise Vibe combines creativity, comfort, and convenience to create a vibrant community perfect for both living and investment. With 411 units across 7 floors and an expected completion in June 2026, this exceptional project offers everything you need for a fulfilling and balanced lifestyle.

Arise Vibe invites you to create a life tailored to your desires, where every space is thoughtfully designed to blend modern functionality with personal expression

- Modern and creative spaces: Choose from versatile layouts that adapt to your needs, ensuring every moment is comfortable and inspiring
 - Dynamic facilities: Relax and recharge with diverse amenities that support active, vibrant living
 - A secure community: Enjoy peace of mind in a quality neighborhood that fosters connections and a sense of belonging
 - Exceptional services: Benefit from flexible communal services designed to make your life effortless and enjoyable
- Arise Vibe offers unmatched convenience with its strategic location near Phuket's best beaches, shopping centers, and healthcare facilities:
- Beaches: A short drive to Bang Tao Beach (8.8 km), Surin Beach (11 km), Kamala Beach (13 km), and Layan Beach (14 km).
 - Shopping: Just 950 m to Robinson Lifestyle Thalang, 6.2 km to Porto de Phuket, and 13 km to Central Festival Phuket.
 - Healthcare: Proximity to Thalang Hospital (7 km) and Bangkok Hospital Siriroj (12 km) ensures top-tier medical care is always close.

Why Choose Arise Vibe?

- Versatile design: Modern layouts and stylish finishes create a space where you can truly feel at home.
- Unmatched convenience: Located near Phuket's key attractions, shopping malls, and beaches, making it ideal for residents and vacationers alike.
- Investment potential: With a vibrant community and high demand for rental properties in Phuket, Arise Vibe offers strong investment opportunities.
- Quality you can trust: Developed by Ornsirin Group, a trusted name in creating exceptional living spaces across Thailand.

Whether you're looking for a serene retreat, a vibrant community, or a smart investment, Arise Vibe has it all. Unwind in your private sanctuary, enjoy the convenience of nearby amenities, and explore a lifestyle that celebrates freedom and creativity.

Arise Vibe – The Life You Choose, The Way You Want

Contact us today to secure your dream home or investment at Arise Vibe, Si Sunthon, Phuket.