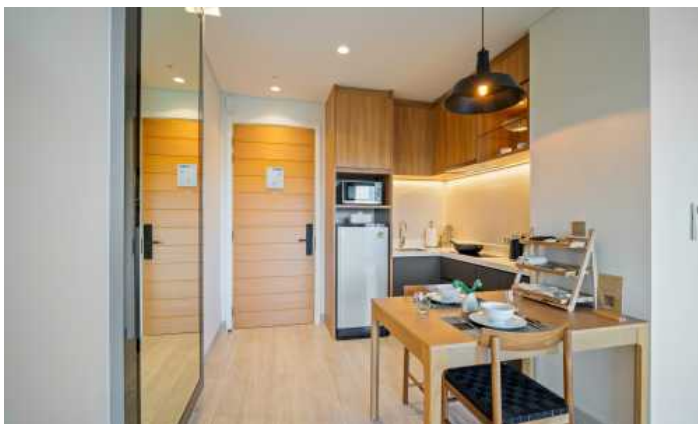


# ID8343 8197 STYLISH 1-BEDROOM APARTMENT LAGUNA LAKESIDE LAKE-SIDE



Deal type	Rent	Total area, m <sup>2</sup>	40
Property type	Apartments	View	Urban View, Garden view
Stage	Completed	Floor	5
Completion date	2024	Floors	7
To the beach, m	400	Parking spots	1
Bedrooms	1	Furniture	Furnished
Guests	2	Listed by	Company
Bathrooms	1		

Periods	Day, THB	3 Days, THB	Week, THB	2 Weeks, THB	Month, THB
01.12 - 01.03	0	0	0	0	90 000







Immerse yourself in luxury and tranquility in our 1-bedroom apartment with views over the serene lagoon at **Laguna Lakeside Residences**. This exclusive condominium, nestled in the heart of **Laguna Phuket**, offers a unique blend of comfort and seclusion. No need to venture far for entertainment, as the vibrant shopping and dining complexes of **Boat Avenue** and **Central Porto de Phuket** are right at your doorstep.

### The Space

This stylish 1-bedroom apartment is perfect for a couple or a solo traveler who values comfort and design. With an expansive layout (35-36 sqm), the space is thoughtfully designed to ensure your comfort. From the spacious living room to the fully-equipped kitchen, everything is here for you to feel right at home. The inspiring interior and cozy atmosphere will allow you to truly unwind without worrying about the little details.

### Your Benefits

Every aspect of this condominium is designed with your comfort in mind. All the modern conveniences are at your fingertips — air conditioning, high-speed Wi-Fi, and free parking. Set in this tranquil location, you'll enjoy nature's beauty without sacrificing convenience and access to everything you need.

### The Surroundings

In the **Laguna Phuket** area, each day feels like a step into a world of nature and serenity. You can enjoy your privacy and stunning surroundings, while the best attractions are just moments away:

- **Boat Avenue** — Only 2.2 km away! This is where style meets entertainment. Designer boutiques, gourmet restaurants, and a market that transforms every stroll into a celebration.
- **Bang Tao Beach** — Just 1.5 km away. Known for its natural beauty, this beach offers pristine sand and clear waters — the perfect place to relax and enjoy the sea breeze.
- **Laguna Phuket Golf Club** — Only 1.8 km away. If you love an active lifestyle, this lush tropical golf course with breathtaking views is your ideal destination.
- **Blue Tree Phuket** — 3 km away. This premier entertainment complex offers a large lagoon, water slides, and a variety of activities, making it the perfect place for family fun.

### Comfort and Care

Your stay is our priority. We are here to ensure your experience is as comfortable as possible. Although we don't provide personal concierge services, we are always ready to assist you in finding something unique, from organizing exciting activities to making reservations at top restaurants. Whatever you need, we are here to help with your requests and inquiries.

### Important Information

Our apartment is a peaceful haven for relaxation. However, please note that construction work is taking place in the surrounding area from 8:00 AM to 5:00 PM, Monday to Saturday. We kindly ask you to take this into consideration when planning your stay. The unit is ideal for couples and solo travelers, but pets are not allowed. Smoking and parties are strictly prohibited within the property.

### Getting Around

Transportation is easy and convenient. Taxis and rideshare services are always available, and if you prefer an active approach, we can assist you in renting a bicycle to explore the beauty of the area at your own pace.

### Check-In and Check-Out

- Check-in: 14:00
- Check-out: 12:00

**Laguna Lakeside** is a modern condominium located at the entrance of the prestigious *Laguna Phuket* complex, right next to the vibrant *Boat Avenue* shopping and entertainment district.

Completed in June 2024, the project consists of 114 residential units spread across seven floors. It offers stylish 1, 2, and 3-bedroom apartments, designed to meet modern living standards and provide maximum comfort.

Residents enjoy premium amenities, including a 60-meter swimming pool, a fully equipped gym, a barbecue area in the garden, and a laundry facility. The upper floors offer stunning views of the lake and the lush landscapes of *Laguna Phuket*.

With its prime location, the residence is just minutes away from the best restaurants, boutiques, and supermarkets at *Boat Avenue* and *Porto de Phuket*. The stunning *Bang Tao Beach*, famous for its white sand and crystal-clear waters, is also within walking distance.

*Laguna Lakeside* is the perfect choice for living, vacationing, and investing—blending nature, comfort, and world-class infrastructure