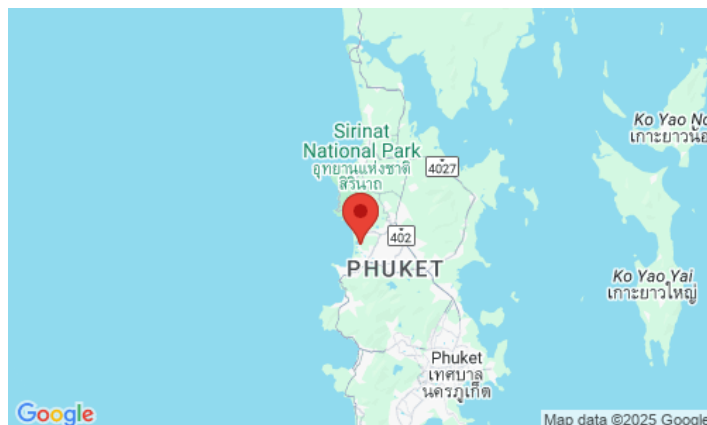
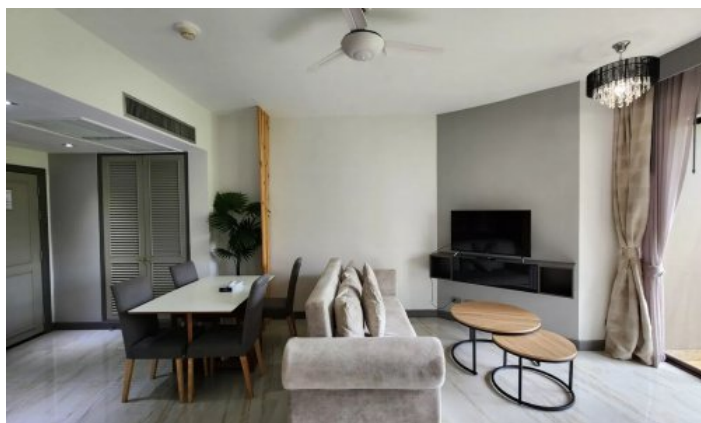


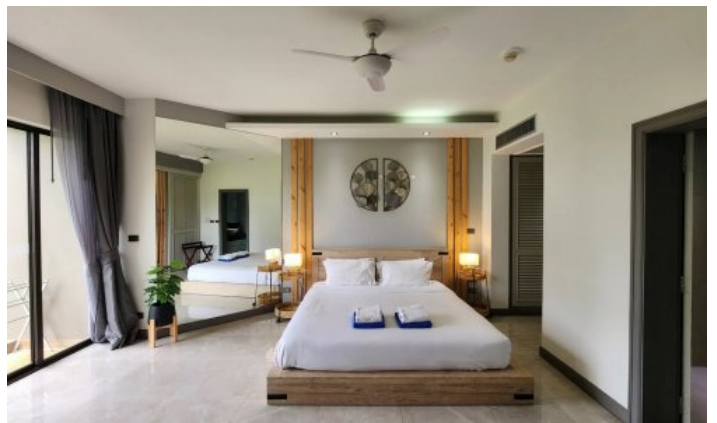
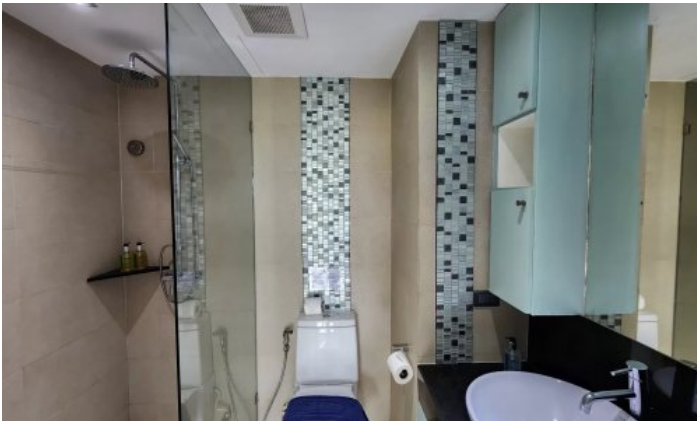
**ID8421 LUXURIOUS 1-BEDROOM APARTMENTS, WITH GOLF COURSE IN ALLAMANDA 2 AND 3 PROJECT, ON BANGTAO/LAGUNA BEACH ( + VIDEO REVIEW)**



**Price 9 000 000 THB (0 USD)**

<b>Deal type</b>	Sale	<b>Price per sqm</b>	145 161 THB
<b>Property type</b>	Apartments	<b>View</b>	Golf course, Garden view
<b>Stage</b>	Completed	<b>Floor</b>	1
<b>Completion date</b>	2009	<b>Floors</b>	3
<b>To the beach, m</b>	800	<b>Furniture</b>	Furnished
<b>Bedrooms</b>	1	<b>Listed by</b>	Private person
<b>Bathrooms</b>	1	<b>Ownership</b>	Leasehold
<b>Total area, m<sup>2</sup></b>	62		





The Allamanda is the first apart-hotel to be built in the heart of Laguna Phuket Resort in 2009 and is still a favourite destination for expats and Phuket guests. The Allamanda complex consists of three three-storey buildings: Allamanda 1 is facing the sea and the fresh lake and Allamanda 2 and 3, which with all its windows overlooks the luxurious Laguna Golf course. Allamanda guests and residents can take advantage of the entire infrastructure of the huge Laguna Phuket Resort, receiving privileges in the form of discounts at the restaurants, spas and boutiques of the resort. Allamanda has 4 types of apartments: studios, one-bedroom, two-bedroom and three-story duplexes. In total, the project has 115 spacious apartments ranging from 65 to 140 m<sup>2</sup>. Allamanda attracts golf loving amateurs and professionals from all over the world.

### **Infrastructure**

Allamanda has its own bar, reception, two communal swimming pools with sun loungers and showers, minimart, walking paths. A free shuttle bus runs regularly from the complex to the beach and back. While resting in Allamanda, you do not need to rent transport - you can get to any point of the resort by shuttle bus. This is especially convenient for families with small children.

### **What's nearby**

Allamanda Complex is located just a 5-10 minute walk from Bangtao Beach. This beach is where Phuket's most popular beach clubs are located, such as Xana Beach Club, Dream Beach Club and Catch Club. Laguna Phuket Golf Club is next to Allamanda and hosts international tournaments. Inexperienced golfers can use the services of a personal golf coach. A 5-minute drive from Allamanda is the Boat Avenue shopping complex with a variety of shops, countless restaurants and bars, and a European supermarket Villa Market. The modern Porto De Phuket shopping complex, with countless restaurants, Tors supermarket, boutiques and food court, is just a short drive away. Nearby is the Lemonade Kids Club with a children's room and a pool for children, a hot sauna for adults. The bustling party scene of Patong is a 30-minute drive from the complex. The road from the airport to the complex will take about 25 minutes.

### **For whom is it suitable**

Allamanda is located in one of the most prestigious areas of Phuket with developed infrastructure, but the cost of housing is relatively low. Therefore, the project is suitable for all those who prefer a measured rest surrounded by beautiful landscapes to a noisy crowd of tourists. Allamanda is loved by everyone, from young families with children to people of venerable age. Whether you rent or purchase a property in Laguna Phuket, you and your home acquire the style, lifestyle and privileges of a resident of the most prestigious Asian resort.